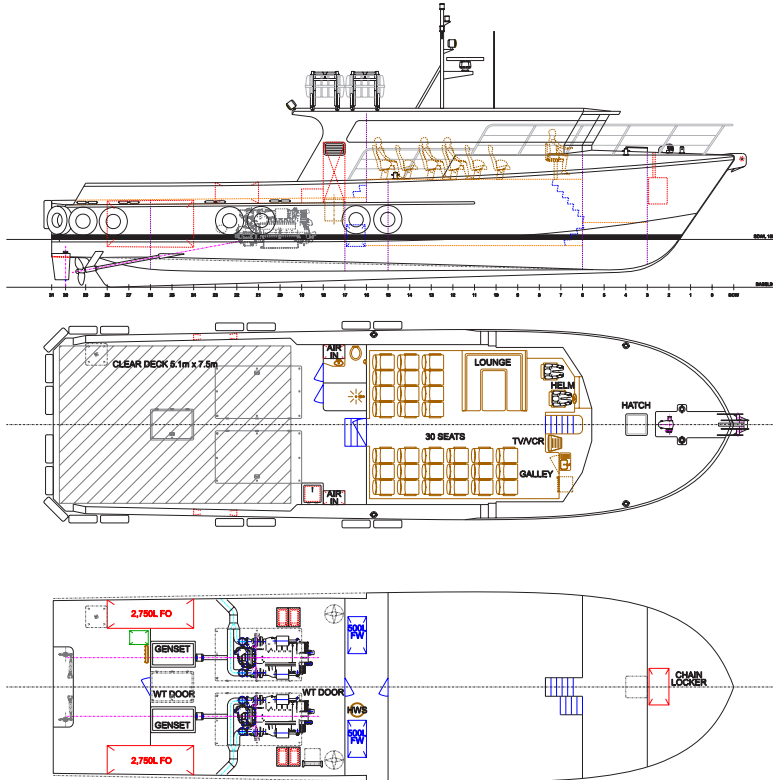




OFFSHORE 22 FPP

22.1 metre Crew / Pilot Vessel



SPECIFICATIONS

Length Overall:	22.1 metres
Beam Moulded:	6.3 metres
Draft (max):	1.7 metres
Propulsion Power:	2 x 1205 BHP
Speed @ 100% MCR:	26 knots
Fuel Capacity:	5,500 litres
Tankage (Portable Water):	1,000 litres
Passengers	30
Deck Area:	38 m2

sales@strategicmarine.com

www.strategicmarine.com

AUSTRALIA



Lot 5 Clarence Beach Road,
Henderson, WA,
Australia, 6166

T: +61 (8) 9437 4840
F: +61 (8) 9437 4838

SINGAPORE



Number 04 Pioneer Sector 1
Singapore, 624816

T: +65 6558 7877
F: +65 6558 7277

VIETNAM



12 Dong Xuyen Industrial Zone,
Vung Tau City,
Vietnam

T: +84 64 615 225
F: +84 64 615 228

MEXICO



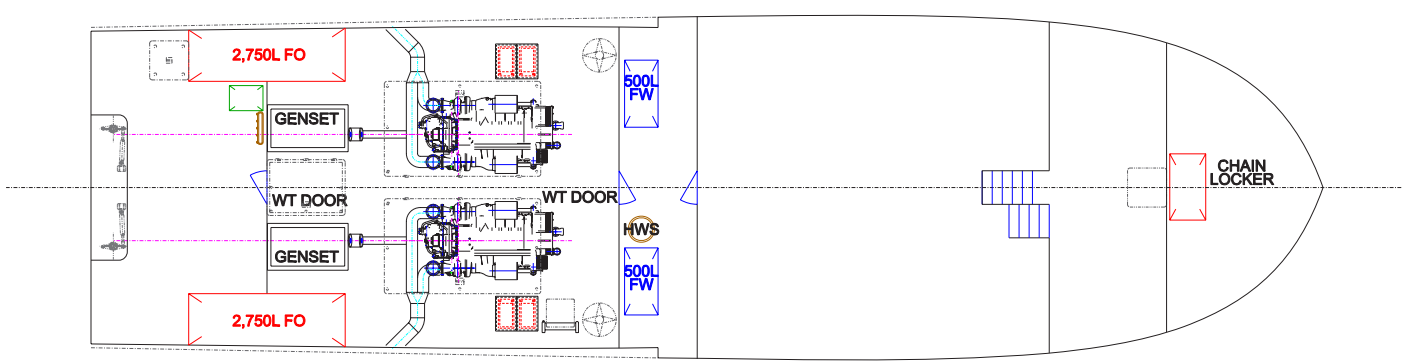
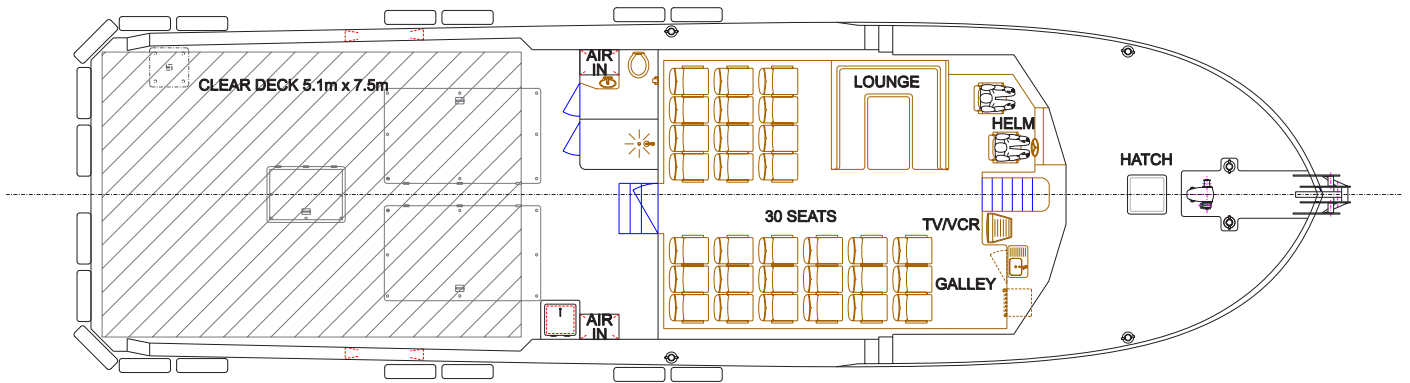
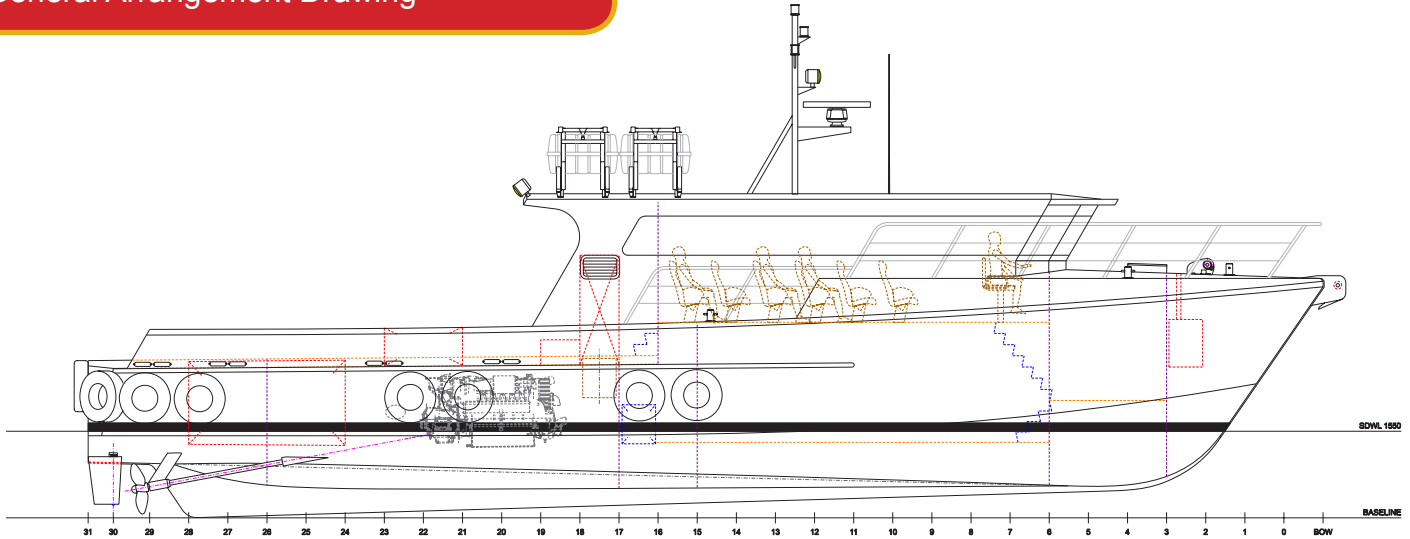
Estero De Urias S/N, Mazatlán,
Sinaloa,
Mexico, 82099

T: +52 669 9911295
F: +52 669 9911299



OFFSHORE 22 FPP

General Arrangement Drawing



sales@strategicmarine.com

www.strategicmarine.com

AUSTRALIA 

Lot 5 Clarence Beach Road,
Henderson, WA,
Australia, 6166

T: +61 (8) 9437 4840
F: +61 (8) 9437 4838

SINGAPORE 

Number 04 Pioneer Sector 1
Singapore, 624816

T: +65 6558 7877
F: +65 6558 7277

VIETNAM 

12 Dong Xuyen Industrial Zone,
Vung Tau City,
Vietnam

T: +84 64 615 225
F: +84 64 615 228

MEXICO 

Estero De Urias S/N, Mazatlán,
Sinaloa,
Mexico, 82099

T: +52 669 9911295
F: +52 669 9911299