



Strategic Marine Maritime Solutions



MAIN PARTICULARS

LENGTH OVERALL	13.10 m
DRAFT	0.75 m
BEAM	4.30 m
DEPTH	2.20 m
CLASS	Lloyds
NOTATION	+100 A1 SSC(Special Services Craft) Passenger Mono G3

CAPACITIES

FRESH WATER	200 L
FUEL OIL	1,200 L
HYDRAULIC OIL	200 L
SEWAGE TANK	500 L

MACHINERY

PROPULSION TYPE	Waterjet
PROPULSION MAKE	Hamilton HJ322
NUMBER OF MAIN ENGINES (WING)	2
MAIN ENGINE MAKE (WING)	Catepillar
MAIN ENGINE MODEL (WING)	3126B
MAIN ENGINE RATING (WING)	315 BHP
GEAR BOX MAKE (WING)	2 x MG
GEAR BOX MODEL (WING)	5061 SC
NUMBER OF GENERATORS	1
MAIN GENERATORS	16 kVA Yanmar 3TNE-** Genset

PERFORMANCE

SPEED	24 Knots
LOAD CONDITIONS	3.6 DWT
ENGINE OUTPUT	80% MCR
ENDURANCE	
FUEL CONSUMPTION	

ACCOMODATIONS

CREW QUARTERS	2 px
PASSENGER SEATING	25 pax
ELECTRONICS AND CONTROLS	
SATELLITE COMPASS	Silva 150F
GMDSS VHF/DSC RADIOS	GME GX 548 VHF
ANTENNA	4 x VHF whip
NAVTEX RECEIVER	JMC Navtex, NT-2000
EPIRB	GME. Model MT-401FF,
SART	McMurdo SART radar transponder. 9ghz.
VHF RADIOS (HANDHELD)	2 x McMurdo VHF / Walkie Talkie
SPARE BATTERIES	2 units McMurdo Lithium Battery
TALKBACK / PA SYSTEM	Uller International
TELEPHONE SYSTEM	2 units 1000W Searchlights.
CCYV	2 engine room & 1 generator cameras
MAGNETIC COMPASS	5" SILVA offshore

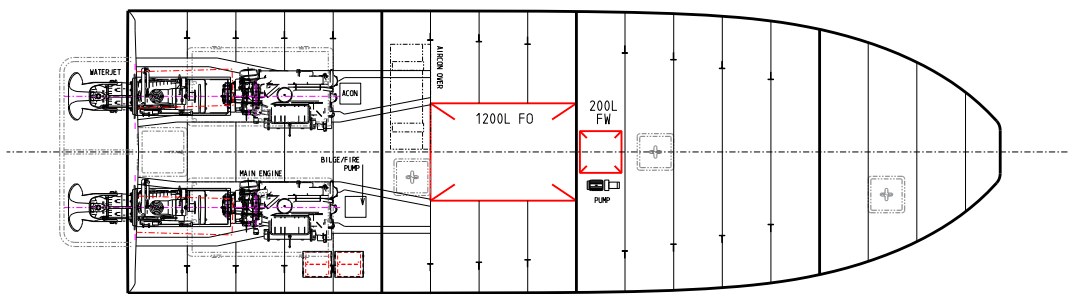
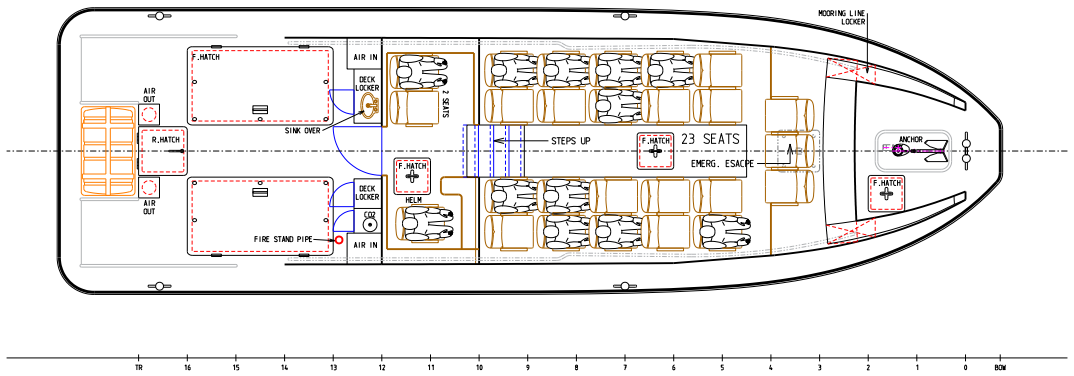
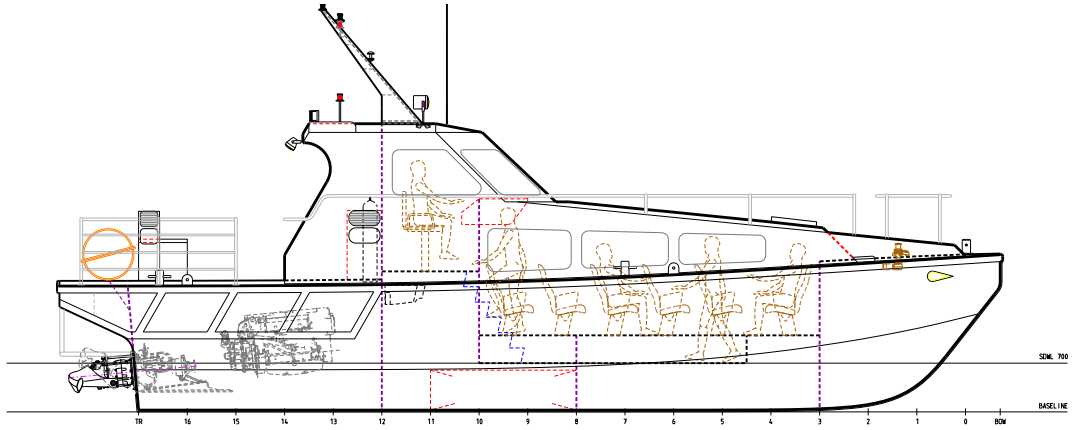
14.00M OFFSHORE VESSEL



Strategic Marine Maritime Solutions



14.00M OFFSHORE VESSEL



BUILDING FOR THE FUTURE